

PRODUCT GUIDE

Conduit Pipes • Conduit Fittings • Fittings for Flexible Conduits
Metallic Boxes and Covers • Metal Enclosures • Enclosure Components
Conduit Bodies • Weatherproof Boxes and Covers • Channels and Supports
Cable Ties • AL9CU Aluminum Lugs • Tools





ELECTRICAL METALLIC TUBING (EMT)

Electro-galvanized



ANSI C80.3
UL 797

TRADE SIZE		NOMINAL OUTSIDE Ø		NOMINAL WALL THICKNESS		UNIT LENGTH		WEIGHT OF 10 UNIT LENGTHS (KG)
in.	mm.	in.	mm.	in.	mm.	mm.	ft.	
1/2	16	0.706	17.93	0.042	1.07	3050	10	12.95
3/4	21	0.922	23.42	0.049	1.25	3050	10	19.75
1	27	1.163	29.54	0.057	1.45	3050	10	29.00
1-1/4	35	1.510	38.35	0.065	1.65	3050	10	43.10
1-1/2	41	1.740	44.20	0.065	1.65	3050	10	49.95
2	53	2.197	55.80	0.065	1.65	3050	10	63.55

INTERMEDIATE METAL CONDUIT (IMC)

Hot-dipped galvanized inside and outside

Threaded at both ends with one coupling at one end, thread protector on the other.



ANSI C80.6
UL 1242



TRADE SIZE		NOMINAL OUTSIDE Ø		NOMINAL WALL THICKNESS		UNIT LENGTH (without coupling)			WEIGHT OF 10 UNIT LENGTHS (KG)
in.	mm.	in.	mm.	in.	mm.	mm.	ft.	± 1/4 in.	
1/2	16	0.815	20.70	0.078	1.97	3030	9	11-1/4	28.12
3/4	21	1.029	26.14	0.083	2.10	3030	9	11-1/4	38.10
1	27	1.290	32.77	0.093	2.35	3025	9	11	53.98
1-1/4	35	1.638	41.59	0.095	2.41	3025	9	11	71.67
1-1/2	41	1.883	47.82	0.100	2.54	3025	9	11	88.00
2	53	2.360	59.93	0.105	2.67	3025	9	11	116.12
2-1/2	63	2.857	72.57	0.150	3.81	3010	9	10-1/2	200.04
3	78	3.476	88.29	0.150	3.81	3010	9	10-1/2	246.30
3-1/2	91	3.971	100.86	0.150	3.81	3005	9	10-1/4	285.31
4	103	4.466	113.44	0.150	3.81	3005	9	10-1/4	317.52

RIGID STEEL CONDUIT (RSC)

Hot-dipped galvanized inside and outside

Threaded at both ends with one coupling at one end, thread protector on the other.



ANSI C80.1
UL 6



TRADE SIZE		NOMINAL OUTSIDE Ø		NOMINAL WALL THICKNESS		UNIT LENGTH (without coupling)			WEIGHT OF 10 UNIT LENGTHS (KG)
in.	mm.	in.	mm.	in.	mm.	mm.	ft.	± 1/4 in.	
1/2	16	0.840	21.34	0.104	2.64	3030	9	11-1/4	35.80
3/4	21	1.050	26.67	0.107	2.72	3030	9	11-1/4	47.60
1	27	1.315	33.40	0.126	3.20	3025	9	11	69.40
1-1/4	35	1.660	42.16	0.133	3.38	3025	9	11	91.20
1-1/2	41	1.900	48.26	0.138	3.51	3025	9	11	112.90
2	53	2.375	60.33	0.146	3.77	3025	9	11	150.60
2-1/2	63	2.857	73.03	0.193	4.90	3 010	9	10-1/2	239.00
3	78	3.500	88.90	0.205	5.21	3010	9	10-1/2	309.60
4	103	4.500	114.30	0.225	5.72	3005	9	10-1/4	441.00

ELBOWS



Electrical Metallic Tubing (EMT) (1/2"-2")



Intermediate Metal Conduit (IMC) (1/2"-4")



Rigid Steel Conduit (RSC) (1/2"-4")

TRADE SIZE (IN)	MIN. RADIUS (R) TO CENTER OF CONDUIT	MIN. STRAIGHT LENGTH L _s AT EACH END (MM)
1/2	101.60	38.10
3/4	114.30	38.10
1	146.05	47.63
1-1/4	184.15	50.80
1-1/2	209.55	50.80
2	241.30	50.80
2-1/2	266.70	76.20
3	330.20	79.38
3-1/2	381.00	82.50
4	406.40	85.73

FLEXIBLE CONDUITS

LIQUIDTIGHT FLEXIBLE CONDUIT



- Zinc galvanized steel strip, interlocked
- Waterproof, oil resistant
- PVC jacket in grey color
- Temperature rating: -20°C ~ +80°C
- IP65

SIZES: 1/2", 3/4", 1", 1-1/4", 1-1/2", 2", 2-1/2", 3", 4"

STEEL FLEXIBLE CONDUIT



Helically wound square-locked flexible metal conduit

- Zinc galvanized steel strip, square-locked
- Temperature rating: -10°C - +60°C

SIZES: 3/8", 1/2", 3/4", 1", 1-1/4", 1-1/2", 2"

PVC COATED FLEXIBLE CONDUIT



Helically wound square-locked flexible conduit with PVC coating

- Zinc galvanized steel strip
- Soft type PVC coat for extra flexibility, oil resistant
- PVC coat in black color
- UV resistant

SIZES: 3/8", 1/2", 3/4", 1"

CONDUIT FITTINGS

LOCKNUT

Zinc Die-Cast

Steel



UL Listed
E475294



Non-UL Listed

BUSHING

Zinc Die-Cast



UL Listed
E475294



INSULATED GROUNDING BUSHING

Zinc Die-Cast (Al-Cu lay-in Lug)



CONDUIT CLAMP

Rigid Steel

Malleable Iron



IMC COUPLING

Steel



3-PIECE COUPLING

Zinc Die-Cast



ETF COUPLING

Zinc Die-Cast



EMT to Flexible

WATERTIGHT HUB

Zinc Die-Cast



REDUCING BUSHING

Zinc Die-Cast



SERVICE ENTRANCE CAP

Zinc Die-Cast



Threaded Type

Clamp Type

EMT CONNECTOR

Zinc Die-Cast



UL Listed
E475295



Set Screw Type



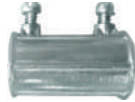
Compression Type

EMT COUPLING

Zinc Die-Cast



UL Listed
E475295



Set Screw Type



Compression Type

EMT RAINLIGHT CONNECTOR

Zinc Die-Cast



Compression Type

EMT RAINLIGHT COUPLING

Zinc Die-Cast



Compression Type

LIQUIDTIGHT CONNECTOR

Zinc Die-Cast



UL Listed
E475294



Straight Type



Angle Type

BX CONNECTOR

Zinc Die-Cast



Straight Type



Angle Type

PULL ELBOW EMT TO EMT

Zinc Die-Cast



PULL ELBOW RIGID TO RIGID

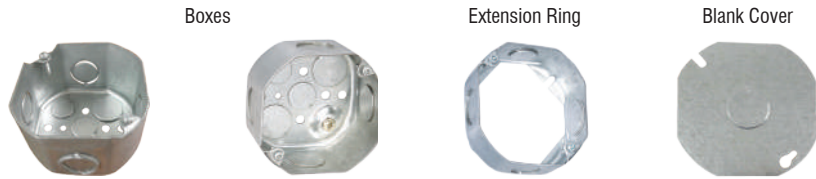
Zinc Die-Cast



METALLIC ELECTRICAL BOXES



Octagonal Box



CATALOG NO.	MGOB-1/2-3/4	MGOB-1/2	MGEROB-1/2-3/4	MGOCV
SIZE	4"x4" x 2-1/8"	4"x4" x 2-1/8"	4"x4" x 1-1/2"	4"x4" - 1/2" K.O.
SIDE K.O.	(4) 1/2" or 3/4" Con.	(4) 1/2"	(1) 1/2", (1) 3/4"	N/A
BOTTOM K.O.	(2) 1/2" & (2) 3/4"	(4) 1/2"	N/A	N/A
THICKNESS	Gauge 16	Gauge 16	Gauge 16	1.0 mm
VOLUME	34 cu.in.	34 cu.in.	N/A	N/A
GROUNDING	With Earth Grounding	With Earth Grounding	N/A	N/A

*Cover Non-UL Listed

Utility Box



CATALOG NO.	MGUB-1/2	MGUB-3/4	MGERUB-1/2	MGERUB-3/4	MGUCV
SIZE	4"x4" x 2-1/8"	4"x4" x 2-1/8"	4"x2" x 1-7/8"	4"x2" x 1-7/8"	(4"x2") with screws
SIDE K.O.	(3) 1/2"	(2) 3/4"	(3) 1/2"	(2) 3/4"	N/A
END K.O.	(1) 1/2"	(1) 3/4"	(1) 1/2"	(1) 3/4"	N/A
BOTTOM K.O.	(2) 1/2"	(2) 3/4"	N/A	N/A	N/A
THICKNESS	Gauge 16	Gauge 16	Gauge 16	Gauge 16	1.0 mm
VOLUME	17 Cu. in.	17 Cu. in.	N/A	N/A	N/A
GROUNDING	With Earth Grounding	N/A	N/A	N/A	N/A

*Cover Non-UL Listed

Square Box



CATALOG NO.	MGSB-1/2-3/4	MGSB1116-1/2-3/4	MGERSB-1/2-3/4	MGERSB1116-1/2-3/4	MGSCV	MGSB1116CV	MGRC44	MGRC41116
SIZE	4"x4" x 2-1/8"	4-11/16" x 4-11/16" x 2-1/8"	4"x4" x 2-1/8"	4-11/16" x 4-11/16" x 2-1/2"	4"x4"	4-11/16" x 4-11/16"	4"x4"	4-11/16" x 4-11/16"
SIDE K.O.	(2) 1/2" or 3/4" Con.	(2) 1/2" or 3/4" Concentric	8-1/2" & 4-3/4"	8-1/2" & 4-3/4"	N/A	N/A	N/A	N/A
BOTTOM K.O.	(2) 1/2" & (2) 3/4"	(2) 1/2" & (2) 1/2" & 3/4" Con.	N/A	N/A	N/A	N/A	N/A	N/A
THICKNESS	Gauge 16	Gauge 16	Gauge 16	Gauge 16	1.0 mm	1.0 mm	1.0 mm	1.0 mm
VOLUME	34 Cu. in.	46.70 Cu. in.	N/A	N/A	N/A	N/A	N/A	N/A
GROUNDING	With Earth Grounding	With Earth Grounding	N/A	N/A	N/A	N/A	N/A	N/A

*Cover Non-UL Listed

3x3 Square Box



For European Wiring Devices
(Non UL Listed)

CATALOG NO.	MG3X3
SIZE	72 x 72 x 47mm
SIDE K.O.	(4) 1/2" & (4) 3/4"
BOTTOM K.O.	(2) 1/2" & (1) 3/4"
THICKNESS	1.0 mm
DESCRIPTION	With Bronze Terminal

CONDUIT BODIES



ALUMINUM DIE-CAST



C Sizes: 1/2"-2"
LR Sizes: 1/2"-4"
LL Sizes: 1/2"-2"
LB Sizes: 1/2"-4"
T Sizes: 1/2"-2"

MALLEABLE IRON

FINISHES:
Body - Malleable Iron
 Triple Coat Zinc Electroplate
 Epoxy Powder Coat
Cover - Steel, Zinc Electroplate



C Sizes: 1/2"-2"
LR Sizes: 1/2"-2"
LB Sizes: 1/2"-3"
T Sizes: 1/2"-2"

WEATHERPROOF BOXES

ALUMINUM DIE-CAST



1 GANG 3 HOLES
 1 Top, 1 Bottom, 1 Back

CATALOG NO.	HUB SIZE
FSB50-3	1/2"
FSB75-3	3/4"



1 GANG 4 HOLES
 1 Top, 2 Bottom, 1 Back

CATALOG NO.	HUB SIZE
FSB50-4	1/2"
FSB75-4	3/4"



1 GANG 5 HOLES
 2 Top, 2 Bottom, 1 Back

CATALOG NO.	HUB SIZE
FSB50-5	1/2"
FSB75-5	3/4"



1 GANG 5 HOLES
 1 on each side, 1 Back

CATALOG NO.	HUB SIZE
FSB50-5X	1/2"
FSB75-5X	3/4"



4" ROUND BOX

CATALOG NO.	HUB SIZE
BRD-4	1/2"
RB-7	3/4"



2 GANG 5 HOLES
 2 Top, 2 Bottom, 1 Back

CATALOG NO.	HUB SIZE
TGB50-5	1/2"
TGB75-5	3/4"



2 GANG 5 HOLES
 1 on each side, 1 Back

CATALOG NO.	HUB SIZE
TGB50-5X	1/2"
TGB75-5X	3/4"



2 GANG 7 HOLES
 2 Top, 2 Bottom,
 1 on each side, 1 Back

CATALOG NO.	HUB SIZE
TGB50-7X	1/2"
TGB75-7X	3/4"



2 GANG 7 HOLES
 3 Top, 3 Bottom, 1 Back

CATALOG NO.	HUB SIZE
TGB50-7	1/2"
TGB75-7	3/4"



2 GANG 9 HOLES
 3 Top, 3 Bottom,
 1 on each side, 1 Back

CATALOG NO.	HUB SIZE
TGB50-9	1/2"
TGB75-9	3/4"

WEATHERPROOF BOX COVERS

EXTENSION RINGS

CLOSURE PLUG



1 Gang Cover
 Steel with Gasket



2 Gang Cover
 Steel with Gasket



Round Cover
 Steel with Gasket



1 Gang Cover
 Zinc Die-Cast



1 Gang Cover
 Zinc Die-Cast



2 Gang Cover
 Zinc Die-Cast



Round Extension Ring
 (4 Holes)
 Hole size: 1/2",
 3/4"

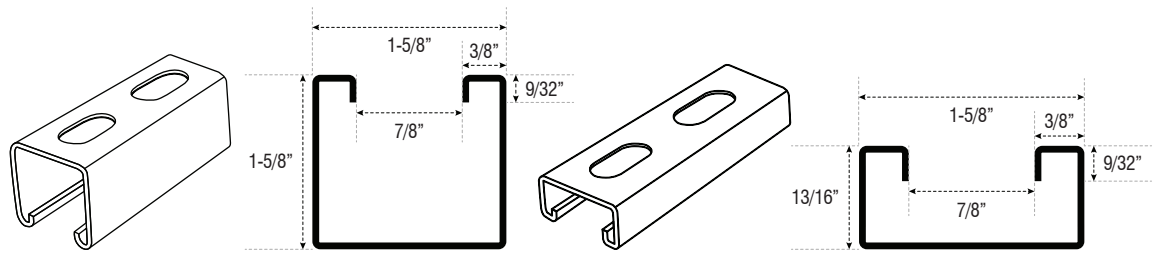


1 Gang Flanged Ext. Ring
 (4 Holes)
 Hole size: 1/2",
 3/4"

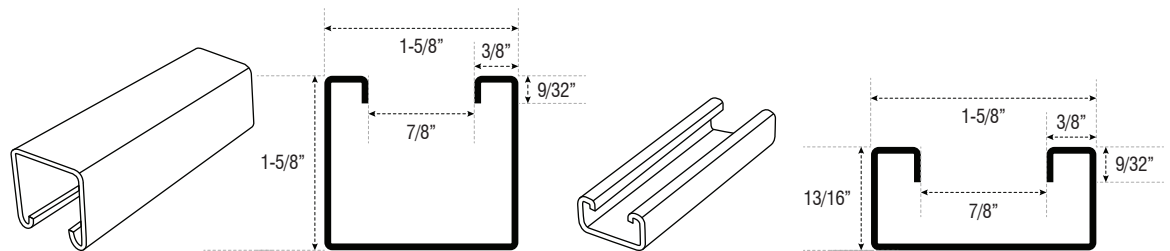


Zinc Die-Cast
 Size: 1/2", 3/4"

CHANNELS & SUPPORTS



HALF-SLOT CHANNEL	DIMENSION	SLOT SIZE	SLOT SPACE	THICKNESS	FINISH
	1-5/8" x 1-5/8"	13/25" x 1-3/25"	2"	Ga.14	Hot-dipped Galvanized
	1-5/8" x 13/16"	13/25" x 1-3/25"	2"	Ga.14	Hot-dipped Galvanized
	1-5/8" x 1-5/8"	13/25" x 1-3/25"	2"	Ga.16	Pre-galvanized
	1-5/8" x 13/16"	13/25" x 1-3/25"	2"	Ga.16	Pre-galvanized



SOLID CHANNEL	DIMENSION	SLOT SIZE	SLOT SPACE	THICKNESS	FINISH
	1-5/8" x 1-5/8"	N/A	N/A	Ga.14	Hot-dipped Galvanized
	1-5/8" x 13/16"	N/A	N/A	Ga.14	Hot-dipped Galvanized
	1-5/8" x 1-5/8"	N/A	N/A	Ga.16	Pre-galvanized
	1-5/8" x 13/16"	N/A	N/A	Ga.16	Pre-galvanized

SUPPORTS



CONDUIT HANGER
Zinc Coated Steel
Size: 1/2" - 2"



LOOP HANGER
Zinc coated steel
Size: 1/2" - 4"



CLEVIS HANGER
Zinc coated steel
Size: 2" - 12"



U-BOLT
Zinc coated steel, with 2 nuts
Size: 1/4" - 1/2" to 1/4" - 2"



STRUT CLAMP
Zinc Coated Steel
Size: 1/2" - 4"



BEAM CLAMP
Finish: Electro-galvanized (Gold Galv)

Steel
Size: 3/8", 1/2"
Load: 770 lbs (350 kg)



CLAMPING NUT
Electro-galvanized Steel
Size: 3/8", 1/2"



HANGER ROD
Electro-galvanized Steel
Size: 1/4" Ø, 3/8" Ø, 1/2" Ø, 5/8" Ø



ANCHOR GRIP
Zinc coated steel
Size: 1/4", 3/8", 1/2"

ENCLOSURES

POWDER COATED

Finish: Epoxy Polyester Coating
Color: RAL7032

Complies with IEC60529
IP66, Nema 4 and 12



DIMENSIONS IN mm (H x W x D)	
Single Lock	Double Lock
300 x 250 x 150	600 x 400 x 200
400 x 300 x 200	700 x 500 x 200
500 x 300 x 200	700 x 500 x 250
500 x 400 x 200	800 x 600 x 200
	800 x 600 x 250
	1000 x 800 x 300
	1200 x 800 x 300

STAINLESS STEEL

SS304 Stainless steel enclosure
Complies with IEC60529
IP66, Nema 4, 4X

Accessories



DIMENSIONS IN mm (H x W x D)	
Single Lock	Double Lock
300 x 250 x 150	600 x 400 x 200
400 x 300 x 200	700 x 500 x 200
500 x 400 x 200	

PC WEATHERPROOF ENCLOSURE

IP65, IK08 • CE, ROHS approved
Clip type

CATALOG NO.	DIMENSIONS (mm)
MGPC-302017	300 x 200 x 170
MGPC-403017	400 x 300 x 170



ABS WEATHERPROOF ENCLOSURE

IP65, IK08 • CE, ROHS approved • Lockable type

CATALOG NO.	DIMENSIONS (mm)
MGABS-302016	300 x 200 x 160
MGABS-403016	400 x 300 x 160
MGABS-504019	500 x 400 x 195
MGABS-604019	600 x 400 x 195



WEATHERPROOF DISTRIBUTION BOXES

IP66



2 Ways
IP54

3 Ways

4 Ways

6 Ways



9 Ways



12 Ways

CONSUMER ENCLOSURES

IP 30

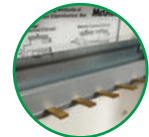
8/12/16/20/24/32 ways



Mounting Rail



Neutral & Grounding
Terminal



Comb Busbar

Features <<<<

- Made of high quality PC material
- PC transparent gray door, opens sideways with Din Rail, copper and neutral bars
- Fire resistant (650°C / 30s) and with anti-UV protection
- Ambient temperature:
- -5 - +40 (50% humidity permitted under max of +40°C)
- Storage temperature: -40 - +75°C
- Surface mounted
- Color: Gray (RAL 7032)

Features <<<<

- Made of high quality self-extinguishing polycarbonate frame
- Resistant to abnormal heat up to 650°C/30S
- Complies with IEC60670-1 and IEC60670-24
- PC transparent gray cover, opens sideways
- Powder coated metal base, 1 mm thickness
- 230/400V, 50/60Hz, IP30
- 63A or 100A busbar, 2P are supplied separately

CABLE TRUNKING

SLOTTED • SOLID



MATERIAL:

Self-extinguishing PVC. UL94 Flammability Rating of V-0

COLOR:

Slotted: Grey (RAL7042)
Solid: White (RAL9003)

Features <<<<<

- Smooth edges protect hands & wiring insulation.
- Recognized Continuous Use Temperature: -40~ +70°C
- UL Listed E492107

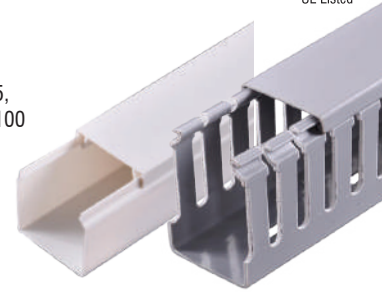
SLOTTED sizes (mm):

25x25, 25x45, 45x45, 45x65, 50x50, 65x65, 80x80, 100x100

SOLID sizes (mm):

25x25, 50x50

LENGTH: 2 Meters



CABLE GLANDS



Features <<<<<

Threads: Metric, PG, NPT

Protection Grade: IP68

Working temperature: -40°C to 100°C (normal use), 120°C (short time)

Dynamite state: -20°C to 80°C, short time 100°C



Nylon, UL94-V0 (M, PG, NPT)

Nickel plated brass (M, PG, NPT)

WEATHERPROOF JUNCTION BOXES

IP65

With metric knockouts



With knockout plugs/rubber seal



CAT. NO.	DIMENSIONS (mm)			NO. OF KNOCK OUTS /SIZE (mm)	THICKNESS (mm)
	Width	Height	Depth		
MGJB-101070	100	100	70	7/25mm	2
MGJB-151170	150	110	70	10/25mm	2
MGJB151570	150	150	70	7/25mm	2.5
MGJB-201580	200	155	80	10/36mm	2.5
MGJB-252080	255	200	80	12/36mm	2.7
MGJB-302512	300	250	120	12/36mm	7

CAT. NO.	DIMENSIONS (mm)			NO. OF PLUGS	COLOR
	Width	Height	Depth		
MGJBRS-101050	100	100	50	6	Grey
MGJBRS-101070	100	100	70	7	White
MGJBRS-151170	150	110	70	10	Grey
MGJBRS-151570	150	150	70	12	Grey

CABLE TIES

NYLON

UV PROTECTED CABLE TIES (BLACK)

- For extended life in outdoor applications
- Resistant to chemical, grease and oil-base products, and other environmental contaminants

STANDARD CABLE TIES (WHITE)

- For general purpose application

Nylon Type PA6.6, Class 94V-2
Operating temperature -35 to 85°C
Inside serration for strong hold
Sizes: 3-3/16" to 35-1/2"



CABLE TIE MOUNT



Nylon Type PA6.6
Class 94V-2
Color: Black/White
Sizes: 20x20, 25x25 mm

STAINLESS CABLE TIES

Ball Lock Type

MATERIAL: Stainless Steel SS304

Features <<<<<

- High acid resistance
- Good tensile strength
- Easy and convenient operation
- Working temperature: -40°C to 300°C.
- Natural & uncoated finish



Available sizes (Length):
From 200mm-1000mm

AL9CU MECHANICAL LUGS



ONE CONDUCTOR



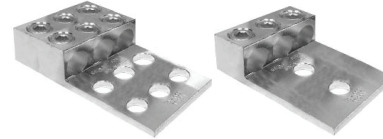
14 AWG-1000MCM 6AWG-1000MCM

TWO CONDUCTOR



14AWG-1000MCM 6AWG-1000MCM

THREE CONDUCTOR



2AWG-1000MCM 14AWG-350MCM

FOUR CONDUCTOR



2 AWG - 600MCM

STACK DESIGN



2 Conductor
• 6 AWG - 350MCM

2 Conductor
• 2 AWG - 600MCM
• 1/0 AWG - 750MCM

3 Conductor
• 2 AWG - 600MCM

4 Conductor
• 2 AWG - 600MCM
• 1/0 AWG - 750MCM

Features <<<<

- Dual rated for aluminum and copper conductors
- Manufactured from high strength aluminum alloy 6061-T6 for maximum conductivity
- Electro-tin plated finish for low contact resistance and protection against corrosion
- Chamfered wire entry for ease of installation
- Rated 600V at 90°C, 486B Listed AL9CU

AL9CU COMPRESSION LUGS



ONE HOLE LONG BARREL



TWO HOLE LONG BARREL



COMPRESSION SPLICES

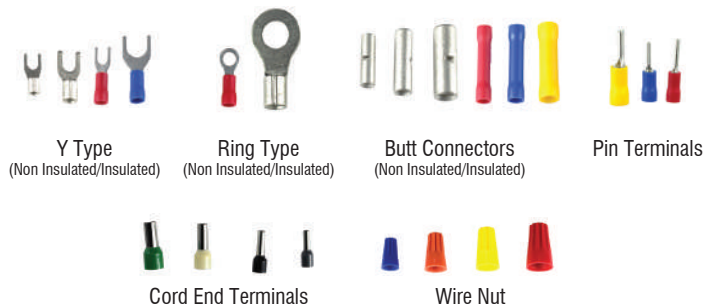


Features <<<<

- Dual rated for aluminum and copper conductors
- Manufactured from high strength aluminum alloy for maximum conductivity
- Electro-tin plated to provide long lasting corrosion resistance
- Color-coded end caps end for easy lug identification
- Internally beveled barrel provides quick and easy wire insertion
- Meets 90°C requirements
- 486B Listed AL9CU, UL File No. E498659

AL9CU COMPRESSION LUGS

TERMINAL BLOCKS



Y Type
(Non Insulated/Insulated)

Ring Type
(Non Insulated/Insulated)

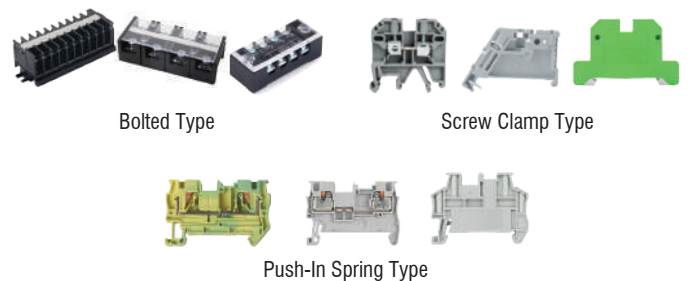
Butt Connectors
(Non Insulated/Insulated)

Pin Terminals

Cord End Terminals

Wire Nut

DIN RAIL MOUNT



Bolted Type

Screw Clamp Type

Push-In Spring Type

BUSBAR INSULATOR

COPPER NEUTRAL BARS

DIN RAIL

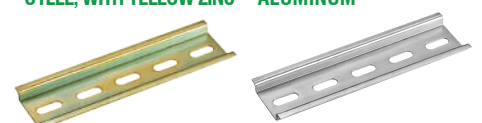


BMC+ steel coating brass, thicker copper plate screw



6 Circuits, 8 Holes

12 Circuits, 14 Holes



STEEL, WITH YELLOW ZINC

ALUMINUM

35mm x 1m x 1mm

35mm x 1m x 1mm

TOOLS

HYDRAULIC CRIMPING TOOLS



Max Output Pressure: 20Kg/cm² - 700Kg/cm²
Output of the Coil: 11cc - 1.4 cc

CATALOG NO.	MGY150
CRIMPING RANGE	10-150mm ²
CRIMPING FORCE	60KN
CRIMPING TYPE	Hexagon crimping
STROKE	15mm

CATALOG NO.	MGH300-AUTO	MGH400-AUTO	MGH300-DL
DESCRIPTION	Auto-release hand hydraulic crimping tool	Auto-release hand hydraulic crimping tool	Dieless hand hydraulic crimping tool
CRIMPING RANGE	Cu 16-300 mm ²	Cu 16-400 mm ²	16-300 mm ² Max. Outer Dia 32 mm connector
CRIMPING FORCE	6T	12T	6T
RATED PRESSURE	700 bar	700 bar	700 bar
WEIGHT	4 kg	6.1 kg	5 kg

CATALOG NO.	MGYQH630 - HEAD MGYQH630PMP - PUMP
CRIMPING RANGE	150 - 630mm ²
CRIMPING FORCE	316KN
CRIMPING TYPE	Hexagon crimping
STROKE	25mm

HANDY CRIMPING TOOL



CATALOG NO.	MG007
CRIMPING RANGE	<ul style="list-style-type: none"> • 0.5 - 6mm² for insulated cable links + butt connectors • 0.5-10mm² for wire-end ferrules and non-insulated cable links

HYDRAULIC CABLE CUTTER



Blade accessory for ACSR

CATALOG NO.	MGHZ45
CUTTING RANGE	Ø 45mm Cu/Al cable and Armoured Cu/Al cable.
CUTTING FORCE	60KN
STROKE	50mm

BATTERY-POWERED CRIMPING AND CUTTING TOOL



CATALOG NO.	MGZ-300C
CRIMPING RANGE	16-300mm ²
CUTTING RANGE	Cu-300mm ² / Al-240mm ²
STROKE	30mm
VOLTAGE/CAPACITY	18V/2.4Ah
CHARGING TIME	40 minutes

BATTERY POWERED MINI CRIMPING TOOL



CATALOG NO.	MGBCT-150	MGBCT-300
CRIMPING FORCE	3.5T	6T
CRIMPING CAPACITY	max. 150mm ²	max. 300mm ²
STROKE	10mm	17mm
STANDARD DIES	cu10-150mm ²	cu16-300mm ²
WEIGHT	1.84 kg	2.55 kg

BATTERY POWERED RATCHET CABLE CUTTER



CATALOG NO.	MGRC-54240
CUTTING CAPACITY	max. Ø54mm cu/al, 240mm ² acsr
BATTERY CAPACITY	18V Li-Ion
WEIGHT	3 kg

RATCHET CABLE CUTTERS



CATALOG NO.	MGZC36CC
CUTTING RANGE	Cu - 240mm ² Al - 300mm ²

CATALOG NO.	MGZ60CC
CUTTING RANGE	Cu - 400mm ² Al - 500mm ²

CATALOG NO.	MGC70A (FOR SWA)
CUTTING RANGE	Max Ø 70 mm
LENGTH	380-485mm
WEIGHT	3.2 kg
TYPE OF CABLE	Cu/Al and Cu/Al Armored Cable

TOOLS

HYDRAULIC MULTI-FUNCTIONAL TOOL



CATALOG NO.	MGH69UNV
CRIMPING RANGE	Al 10-240mm ² Cu 16-300mm ²
CRIMPING FORCE	60KN
CUTTING RANGE	Ø 40mm for standard and armoured Cu/Al cable
PUNCHING RANGE	Ø 22.5 - 61.5mm on 3.5mm mild steel

HYDRAULIC PIPE BENDER



CATALOG NO.	MGWG-1	MGWG-4
STROKE (mm)	170	415
BENDING RANGE	1/2"-1"	1/2"-4"
THICKNESS OF PIPE (mm)	1 to 3.5	2.75 to 6
PIPE MOULDS	1/2", 3/4", 1"	1/2", 3/4", 1", 1-1/4", 1-1/2", 2", 2-1/2", 3", 4"

HYDRAULIC PUNCH DRIVER



CATALOG NO.	MGW12AL	MGPD-15
PUNCHING RANGE	Ø 22.5 - 61.5mm	Ø 22.5 - 61.5mm 100mm (2mm mild steel)
PUNCHING FORCE	120KN	150KN
STROKE	27mm	25mm
KNOCKOUT TYPE	Round Type D	Round Type D, Square (32x32mm)
APPLICABLE MATERIAL	3.5mm mild steel	3.5mm mild steel, plastic aluminum plate

MANUAL PIPE BENDERS - MI HEAD



CATALOG NO.	MGAB-050- MI	MGAB-075- MI	MGAB-100- MI
APPLICABLE PIPES AND SIZES	1/2" EMT	3/4" EMT 1/2" IMC	1" EMT 3/4" IMC
HANDLE LENGTH	38"	38"	44"
BEND RADIUS	10°, 22°, 30°, 45°, and 60°	10°, 22°, 30°, 45°, and 60°	30°, 45°, and 60°

MULTI-FUNCTIONAL CABLE STRIPPERS

Ideal for PVC insulated conductors such as TF wire, TW, control cables, and hook-up wire



CABLE STRIPPERS



CATALOG NO.	MG5328
CABLE SIZE	External diameter 4-28 mm



CATALOG NO.	MG7328
CABLE SIZE	External diameter 2-28 mm

AUTOMATIC CABLE STRIPPERS



CATALOG NO.	MG5000
CABLE SIZE	0.2 - 6 mm ²



CATALOG NO.	MG7R00
CABLE SIZE	Flexible cables 0.5mm ² - 16mm ² Solid cables 0.5mm ² - 10 mm ²

MULTI-FUNCTIONAL CABLE STRIPPERS



CATALOG NO.	MG4000
CABLE SIZE	External diameter 8 - 13mm, strips conductors 0.5 - 6.0mm ²



CATALOG NO.	MG0016
CABLE SIZE	External diameter 8 - 13mm, strips conductors 0.5 - 6.0mm ²

ROUND CABLE STRIPPERS



CATALOG NO.	MG0013
CABLE SIZE	Outer diameter 6 - 13 mm e.g. NYM 3 x 1.5mm ² to 5 x 2.5mm ²



CABLE GUIDE FOR CONDUIT PIPES

Maximum No. of Conductors or Fixture Wires in Electrical Metallic Tubing

Wire Type	Wire Size AWG (mm ²)	ELECTRICAL METALLIC TUBING					
		Trade Size mm (inch)					
		15 (1/2")	20 (3/4")	25 (1")	32 (1-1/4")	40 (1-1/2")	50 (2")
THHN, TWHN	14 AWG (2.0)	12	22	35	61	84	138
	12 AWG (3.5)	9	16	26	45	61	101
	10 AWG (5.5)	5	10	16	28	38	63
	8 AWG (8.0)	3	6	9	16	22	36
	6 AWG (14)	2	4	7	12	16	26
	4 AWG (22)	1	2	4	7	10	16
	2 AWG (30)	1	1	3	5	7	11
	1 AWG (38)	1	1	1	4	5	8
	1/0 AWG (50)	1	1	1	3	4	7
	2/0 AWG (60)		1	1	2	3	6
	3/0 AWG (80)		1	1	1	2	5
	4/0 AWG (100)		1	1	1	2	4
	250 MCM (125)			1	1	1	3
	300 MCM (150)			1	1	1	2
	400 MCM (200)				1	1	1
	500 MCM (250)				1	1	1
	650 MCM (325)				1	1	1



Maximum No. of Conductors or Fixture Wires in Intermediate Metal Conduit

Wire Type	Wire Size AWG (mm ²)	INTERMEDIATE METAL CONDUIT									
		Trade Size mm (inch)									
		15 (1/2")	20 (3/4")	25 (1")	32 (1-1/4")	40 (1-1/2")	50 (2")	65 (2-1/2")	80 (3")	90 (3-1/2")	100 (4")
THHN, TWHN	14 AWG (2.0)	14	24	39	68	91	149	211	326	436	562
	12 AWG (3.5)	10	17	29	49	67	109	154	238	318	410
	10 AWG (5.5)	6	11	18	31	42	68	97	150	200	258
	8 AWG (8.0)	3	6	10	18	24	39	56	86	115	149
	6 AWG (14)	2	4	7	13	17	28	40	62	83	107
	4 AWG (22)	1	3	4	8	10	17	25	38	51	66
	2 AWG (30)	1	1	3	5	7	12	17	27	36	47
	1 AWG (38)	1	1	2	4	5	9	13	20	27	35
	1/0 AWG (50)	1	1	1	3	4	8	11	17	23	29
	2/0 AWG (60)	1	1	1	3	4	6	9	14	19	24
	3/0 AWG (80)		1	1	2	3	5	7	12	16	20
	4/0 AWG (100)		1	1	1	2	4	6	9	13	17
	250 MCM (125)			1	1	1	3	5	8	10	13
	300 MCM (150)			1	1	1	3	4	7	9	12
	400 MCM (200)			1	1	1	2	3	5	7	9
	500 MCM (250)				1	1	1	3	4	6	7
	650 MCM (325)				1	1	1	2	3	5	6
	800 MCM (400)				1	1	1	1	3	4	5
1000 MCM (500)					1	1	1	2	3	4	