



Conduit Body - Type C

For use with Rigid Steel, Rigid Aluminum and IMC Conduit

Applications:

- To provide opening to conductors for pulling, splicing, maintenance, and for future changes.
- Make bends in conduit system.
- Allow connections for branch runs.

Features:

- Rounded integral bushings protect conductor insulation
- Tapered threads for tight, rigid joints and ground continuity
- Flat back design provides greater cubic capacity for easier wire pulling, and room for splicing
- Clip cover design allows easy removal without damaging the conduit body
- Pan-head cover screws secure cover clips and provide superior screwdriver seating and torque

Materials:

Body: Malleable Iron

Cover: Steel

Standard Finishes:

Body: triplecoat - zinc electroplate, chromate, epoxy powder coat

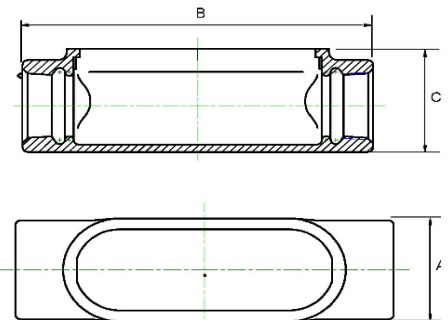
Cover: zinc electroplate

NEC Certifications:

- UL Standard: 514A
- UL Listed: E476800



Cat. No.	Trade Size	Dimensions (in)			Standard Pkg
		A	B	C	
MGM-C50SC	1/2"	1.417	5.512	1.417	5
MGM-C75SC	3/4"	1.654	6.142	1.771	5
MGM-C100SC	1"	1.811	7.008	1.889	5
MGM-C125SC	1-1/4"	2.250	7.598	2.440	2
MGM-C150SC	1-1/2"	2.519	8.189	2.677	2
MGM-C200SC	2"	3.071	9.252	3.346	2





Conduit Body - Type LB

For use with Rigid Steel, Rigid Aluminum and IMC Conduit

Applications:

- To provide opening to conductors for pulling, splicing, maintenance, and for future changes.
- Make bends in conduit system.
- Allow connections for branch runs.

Features:

- Rounded integral bushings protect conductor insulation
- Tapered threads for tight, rigid joints and ground continuity
- Flat back design provides greater cubic capacity for easier wire pulling, and room for splicing
- Clip cover design allows easy removal without damaging the conduit body
- Pan-head cover screws secure cover clips and provide superior screwdriver seating and torque

Materials:

Body: Malleable Iron

Cover: Steel

Standard Finishes:

Body: triplecoat - zinc electroplate, chromate, epoxy powder coat

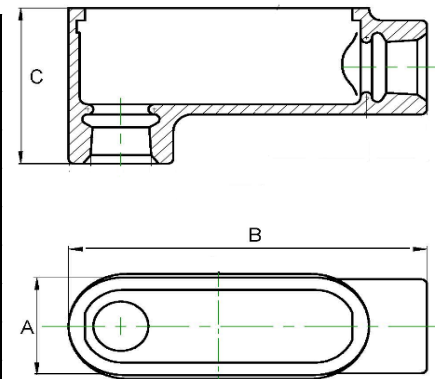
Cover: zinc electroplate



NEC Certifications:

- UL Standard: 514A
- UL Listed: E476800

Cat. No.	Trade Size	Dimensions (in)			Standard Pkg
		A	B	C	
MGM-LB50SC	1/2"	1.338	4.488	2.205	5
MGM-LB75SC	3/4"	1.520	5.098	2.480	5
MGM-LB100SC	1"	1.811	6.043	2.815	5
MGM-LB125SC	1-1/4"	2.204	6.555	3.406	2
MGM-LB150SC	1-1/2"	2.677	7.146	3.642	2
MGM-LB200SC	2"	3.07	8.138	4.37	2
MGM-LB250SC	2-1/2"	3.976	10.52	5.157	1
MGM-LB300SC	3"	4.33	10.61	6.043	1





Conduit Body - Type LR

For use with Rigid Steel, Rigid Aluminum and IMC Conduit

Applications:

- To provide opening to conductors for pulling, splicing, maintenance, and for future changes.
- Make bends in conduit system.
- Allow connections for branch runs.

Features:

- Rounded integral bushings protect conductor insulation
- Tapered threads for tight, rigid joints and ground continuity
- Flat back design provides greater cubic capacity for easier wire pulling, and room for splicing
- Clip cover design allows easy removal without damaging the conduit body
- Pan-head cover screws secure cover clips and provide superior screwdriver seating and torque

Materials:

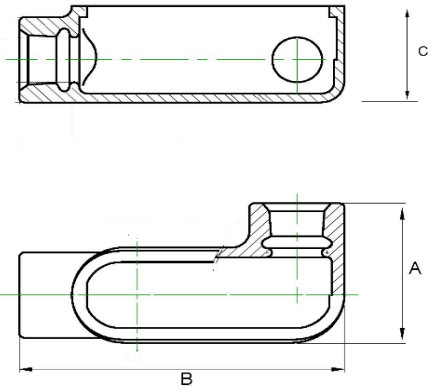
Body: Malleable Iron

Cover: Steel

Standard Finishes:

Body: triplecoat - zinc electroplate, chromate, epoxy powder coat

Cover: zinc electroplate



NEC Certifications:

- UL Standard: 514A
- UL Listed: E476800

Cat. No.	Trade Size	Dimensions (in)			Standard Pkg
		A	B	C	
MGM-LR50SC	1/2"	1.338	4.488	2.205	5
MGM-LR75SC	3/4"	1.520	5.098	2.480	5
MGM-LR100SC	1"	1.811	6.043	2.815	5
MGM-LR125SC	1-1/4"	2.204	6.555	3.406	2
MGM-LR150SC	1-1/2"	2.677	7.146	3.642	2
MGM-LR200SC	2"	3.07	8.138	4.37	2





Conduit Body - Type T

For use with Rigid Steel, Rigid Aluminum and IMC Conduit

Applications:

- To provide opening to conductors for pulling, splicing, maintenance, and for future changes.
- Make bends in conduit system.
- Allow connections for branch runs.

Features:

- Rounded integral bushings protect conductor insulation
- Tapered threads for tight, rigid joints and ground continuity
- Flat back design provides greater cubic capacity for easier wire pulling, and room for splicing
- Clip cover design allows easy removal without damaging the conduit body
- Pan-head cover screws secure cover clips and provide superior screwdriver seating and torque

Materials:

Body: Malleable Iron
Cover: Steel

Standard Finishes:

Body: triplecoat - zinc electroplate, chromate, epoxy powder coat
Cover: zinc electroplate



NEC Certifications:

- UL Standard: 514A
- UL Listed: E476800

Cat. No.	Trade Size	Dimensions (in)			Standard Pkg
		A	B	C	
MGM-T50SC	1/2"	2.409	5.512	1.889	5
MGM-T75SC	3/4"	2.677	6.142	2.204	5
MGM-T100SC	1"	2.941	7.087	2.283	2
MGM-T-125SC	1-1/4"	3.209	7.598	2.440	2
MGM-T150SC	1-1/2"	3.504	8.190	2.598	2
MGM-T200SC	2"	4.094	9.252	3.228	2

